



Dual Skin

Paint Mixing Room



- High Efficiency Lighting
- Easy Access Filters
- Grated Containment Pit
- Pressurized Intake & Exhaust



Garmat® USA Dual Skin Paint Mixing Rooms are designed to provide a well illuminated, and contaminant free ventilated work area for mixing applications. These units utilize a positive pressure environment to help eliminate contaminated shop air from interfering with the mixing process. The Garmat USA Paint Mixing Room is a key element when considering your paint shop requirements. Multiple configurations available to meet your shops specific requirements.

Garmat USA Dual Skin Paint Mixing Rooms are ETL listed as well as NFPA 33 and OSHA compliant.



Single Skin Models available



Dual Skin Paint Mixing Room



Cabin Design

● Cabin Construction

- Durable dual skin white powder coated
- 20 ga. galvanized steel interlocking wall panels

● Doors

- Three foot wide rubber sealed personnel door
- Heavy duty hardware
- 25" x 35" observation window constructed of heavy duty clear tempered glass

● Lighting

- 4-tube interior accessible sealed light fixtures
- Clear tempered glass for optimal safety
- Each fixture is equipped with T-8 5000K color corrected fluorescent tubes to ensure accurate mixing and color matching
- 120 V, Class I div II
- ETL listed

● Filtration

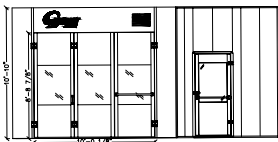
- Comprised of superior grade fiberglass media
- Allows full depth loading and high dust holding capacity
- Performance enhancing skin backing prevents migration of smaller particles

● Ventilation

Shop air is drawn into the room with an 800 CFM intake fan and exhausted with a 900 CFM extract fan ensuring fresh air is constantly circulating throughout the room

● Fire Supression

- Designed to accept fire suppression equipment (Check with your local authorities for code requirements)



Standard Models

Garmat USA manufactures Paint Mix Rooms to fit your particular environment. Our standard models include stand alone, three sided and transitional paint mixing rooms that fit between paint spray booths. The most common configurations are listed below, all dimensions are exterior measurements. Single Skin models also available.

Model	Dimensions	Fans	Light Fixtures
99920	7'-10" x 6'-7"	2	2
99925	7'-10" x 8'-2"	2	2
99930	7'-10" x 9'-9"	2	2
99935	7'-10" x 12'-10"	2	3
99940	7'-10" x 14'-5"	2	3
99945	7'-10" x 16'	2	4

CHAPTER 3 OF NFPA 33 REQUIREMENTS:

When a paint mixing room is within 6' of a spray booth the combined content cannot exceed 120 gallons total. When the paint mixing room is more than 6' from the spray booth contents are limited to 2 gallons per square foot up to a limit of 300 gallons. Paint mixing rooms shall be designed to contain a spill of the contents in the the room. Paint mixing rooms under NFPA 33 guidelines are limited to a maximum of 150 sq. ft.



1401 W Stanford, Englewood CO 80110 800-442-7628 Fax 303-781-2683 www.garmat.com / sales@garmat.com

800-4-GARMAT

8 0 0 - 4 4 2 - 7 6 2 8



CODE COMPLIANCE*

Garmat equipment is built to meet or exceed all applicable codes

ETL listed

Conforms to NFPA 33 Standards

National Emission Standards for Hazardous Air Pollutants – NESHAP SubPart HHHHHH

OSHA Safety and Health Standards (29CFR 1910.107)

**Code compliance is dependent upon the manner in which the equipment is installed and used. The equipment installation is dependent on the local jurisdiction authorities. To ensure compliance it is recommended that Garmat equipment be installed by a certified Garmat Distributor.*